




5. THE QUARTER NOTE, STEM DIRECTION AND MELODY


These  are **QUARTER NOTES**.
 A **QUARTER NOTE** has a **HEAD** →  and a **STEM**. → 

DIRECTIONS: Circle each QUARTER NOTE.




STEM DIRECTION

RULE:
 NOTES BELOW the MIDDLE (3rd) LINE have **STEMS** that go UP to the RIGHT of the NOTE HEAD.



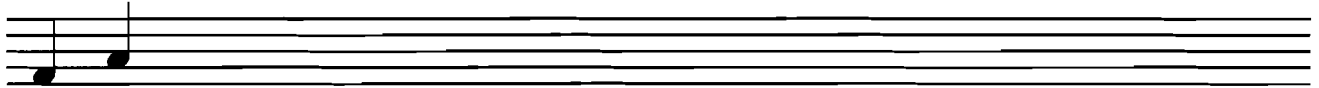
STEMS UP

RULE:
 NOTES ON the MIDDLE (3rd) LINE or ABOVE have **STEMS** that go DOWN to the LEFT of the NOTE HEAD.



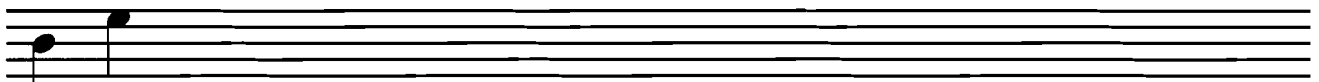
STEMS DOWN

DIRECTIONS: Draw six QUARTER NOTES with STEMS UP on various LINES and SPACES. Remember that NOTES with STEMS UP are drawn BELOW the MIDDLE (3rd) LINE.



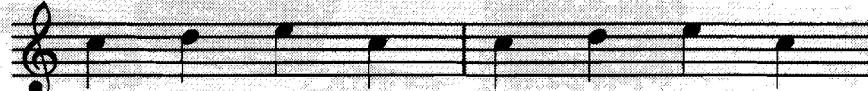
Example

DIRECTIONS: Draw six QUARTER NOTES with STEMS DOWN on various LINES and SPACES. Remember that NOTES with STEMS DOWN are drawn ON the MIDDLE (3rd) LINE or ABOVE.



Example


FRÈRE JACQUES French



Fré - re Jac - ques, Fré - re Jac - ques.


A **MELODY** consists of several PITCHES in a row (horizontal).

DIRECTIONS: Write the LETTER NAMES of the MELODY NOTES for AMERICA.



Example **C**



8. TIME SIGNATURES

These  are **TIME* SIGNATURES**.

The **TIME SIGNATURE** is found at the beginning of the music after the **CLEF SIGN**.

The **TIME SIGNATURE** indicates:

1. How many **BEATS (PULSES)** in a **MEASURE**
2. What kind of **NOTE** gets **ONE (1) BEAT (PULSE)**

 → **FOUR BEATS (4)** in each **MEASURE**
 → **QUARTER NOTE (♩)** gets **ONE BEAT**

Each number should occupy two (2) **SPACES** on the **STAFF**.

*Also known as **METER**

DIRECTIONS: Circle the TIME SIGNATURES.

I KNOW WHERE I'M GOING *Traditional*



I know where I'm go-ing, and

OH, HOW LOVELY IS THE EVENING *German*



Oh, how love - ly is the

TWO FOR ONE *Moore*



MARY HAD A LITTLE LAMB *Hale*



Ma - ry had a lit - tle lamb.

DIRECTIONS: Write a different TIME SIGNATURE $\frac{4}{4}$ $\frac{3}{4}$ $\frac{2}{4}$ after each TREBLE CLEF.

Remember that each number should occupy two (2) SPACES on the STAFF.



DIRECTIONS: Write the LETTER NAMES of the MELODY NOTES.

OLD MACDONALD HAD A FARM *U.S.*



Old Mac - Don - ald had a farm, E - I - E - I - O!

C
Example

REVIEW OF LESSONS 5 — 8

DIRECTIONS: Match each term on the left with the best music example on the right.

- Quarter note
- Bar Line
- Measure
- Melody
- Whole note
- Time signature
- Treble clef
- Half note
- Double bar (Final ending)

ROSES FROM FYN *Danish*

DIRECTIONS: Complete the following statements.

1. Notes below the middle line of the staff have stems that go _____ to the right of the note head.
2. Notes on the middle line of the staff or above have stems that go _____ to the left of the note head.
3. The time signature is found after the _____ sign.
4. The top number of the time signature indicates the number of _____ in a measure.
5. The bottom number of the time signature indicates what kind of _____ gets one beat.

DIRECTIONS: Make quarter and half notes by drawing stems from the note heads.

DIRECTIONS: Draw the following notes on pitches of your choice.

DIRECTIONS: Write the letter names of the notes.